



Key outcomes from Water with Integrated Local Delivery (WILD) Phase 1 in the Upper Thames Catchment

Phase 1 of WILD concludes on March 31st 2016 and is requesting an extension to other water bodies and parishes in the Upper Thames Catchment from 2016 - 2021. WILD Phase 1 has been very successful, delivering far more than was originally specified in each of the target areas, including WFD objectives.

- Farm Visits – a total of 298 farm visits over 3 years covering 118 farms/estates with advice provided for 22,692 hectares of land impacting on and within the project area. This represents nearly all eligible agricultural land within the project area.

Figure 1: Farm visits carried out through an iterative engagement process

Holding	Has	WILD Visits	Follow up - Cross Compliance inc NVZs	Follow Up - Soil Advice	Follow Up - Farm Infrastructure	Follow Up - River Enhancements	Follow Up - Ditch Management	Follow UP - CSF/EA referrals	CSF Grant Applications	Follow up on farm project delivery visits
Estates 2	3750	25	1	1	1	2	2	1		17
Farms 116	18942	273	36	32	30	35	45	13	5	79
Total 118	22692	298	27	45	25	45	36	19	5	96

- Appointment of 20 Farmer Guardians covering over 10,000ha of Upper Thames in wider Wild project area. These are key contacts in the discussions between farmers and agencies like the Environment Agency but also Natural England and Thames Water.
- Through work with Thames Water 500 farmers are engaged in sustainable pesticide management in the Cole, Ampney Brook, Meysey Brook; Lydiard Brook and Ray
- New agreements facilitated under the Countryside Stewardship scheme include:
 - 1,964Ha Higher Tier to be entered in 2016
 - 401ha Mid-tier to be entered for 2016 as initial expressions of interest
 - 1,500Ha Mid-Tier live agreements in 2015 including:
 - 10 Ha grass margins against main rivers on arable land
 - 16 Ha grass margins against ordinary watercourses on arable land
 - 30 Ha of wetland management
 - 5 km hedge management
 - 30 Ha Woodland Management plans
 - 2 Ha woodland creation proposed for 2016
 - 3.5km of river fencing agreed for 2016
- All communities now engaged in integrated water management as part of Parish Planning - 16 parishes and 3 towns engaged in main WILD Project. Three are now linking to Neighbourhood Planning and work has also included 4 parishes and 1 town outside of the WILD 1 project area, showing the demand for a follow on phase.
- Volunteer hours committed (21,600 hrs average 2880 days over 3 years @£75/ day = £216,000)
- Nearly 60 km of potential river enhancements identified and shared with partners
- A total of 300km ditches surveyed
- 30 km of ditches sympathetically managed
- Shade reduction & tree pollarding works conducted on 8555m
- Large Woody Debris deflectors and fagots installed in 5,580m
- New and improved fencing installed on 2455m
- Five livestock drinking bays installed with modified design to satisfy the EA and farmers
- 2.7 km of river treated for Himalayan balsam infestation
- £242,000 grant funding secured from other partners/ funding bodies that helps deliver the overall WILD project objectives.
- 20 Schools engaged in a photographic competition on Water and the production of a 2016 Calendar with winning photos exhibited across Gloucestershire.



- Preparation and circulation of The Community Guide to the Water Environment circulated Nationally in collaboration with ACRE and case study on Integrated Planning tool.
- Ditch Management Guidelines produced and circulated amongst all members of the Upper Thames Catchment Partnership
- A National Conference on the WILD Project approach attended by 84 delegates from across the UK
- Over 15 Events held for farmers and Parish Councils
- Working with communities over 1500 issues and opportunities concerning water flow that impact on the water environment have been mapped and digitised (see Figure 4).

The progress on working with the communities in the WILD project area is illustrated below showing that a single parish remains in the early stages of engagement.

Figure 2 Status of WILD Phase 1 community engagement work with 19 parishes

Early stages	Introductory meeting/ conversation	Mapping meeting being arranged /held	Annotated maps completed	Project development	
				Ready for	Ongoing/ completed
	Latton			Lechlade	Somerford Keynes
				Poole Keynes	Siddington
				Minety	South Cerney
				Oaksey	Poultton
				Castle Eaton *	Cricklade
				Marston Meysey **	Ashton Keynes
					Meysey Hampton
					Down Ampney
					Fairford
					Kempsford
					Driffield (JP)
					Leigh

Key achievements of WILD Phase 1

- Demonstrating the value of facilitation and integrated advice with a doubling of initial financial investment by the EA in water improvement across the WILD project area.
- Increased awareness of the role and remit of all the organisations involved in managing the water environment as shown by outstanding and growing volunteer contribution.
- Clear evidence from the mid-point evaluation interviews of changes in behaviour change amongst the farming community towards WFD and related objectives.
- Communities being enabled to proactively work in a coordinated way with statutory bodies on joint problem solving (Community Voice).
- Increased awareness in communities of the roles and responsibilities of riparian owners and working together, supportively towards an agreed outcome, namely WFD.
- Enhanced management on the Ampney Brook catchment where the early management work is now recognised as being a significant improvement as identified in the before and after pictures.
- Bringing multiple stakeholders together and developing a greater understanding amongst NGOs and agency of the benefits of an integrated approach to deliver at the catchment scale.
- Information exchange and development of Farmer Guardians approach for the management of the water environment and associated habitats by the farming community.
- Environmental delivery under the project is embedded for long term benefit to enable better environmental quality linked to sustainable growth across the project area.
- Demonstration of the benefits of partnership working and valuing the role of all organisations and individuals working together in shared problem solving through the integrated local delivery framework can deliver more than single issue funding.
- A project template that is transferable to other areas in terms of enabling delivery for multiple stake holders against their statutory duty, integrated advisory, facilitation and reporting structures.



Figure 3: WILD Project Area Phase 1

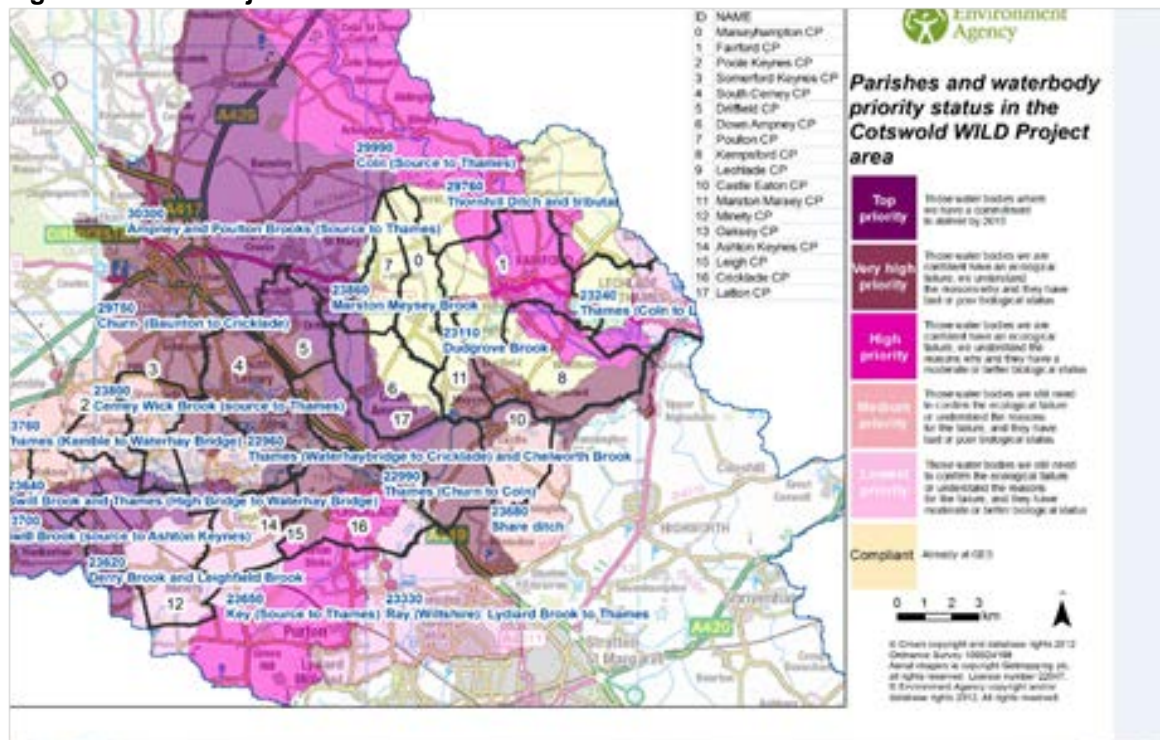


Figure 4: Map of Fairford showing areas of concern and opportunity in the water environment

